

# BetaScreen® 200



Roller blinds



Panel blinds



Rooflight blinds

## Product Data 1% 3%

Composition	100% Thermoplastic Olefin	
Width	1600mm, 2500mm	
Thickness	0.83mm	0.78mm
Weight	496gsm	464gsm
Openness Factor	1%	3%
Fire rating	BS5867 2008 Part 2 Type B	
Cleaning	Soapy water	

5% openness fabric is also available. Please contact us for further details.

## Thermal Control Values

1%						3%					
Colour	Code	Tv	Ts	Rs	As	Colour	Code	Tv	Ts	Rs	As
Midnight	BS20011	2%	1%	6%	93%	Midnight	BS20013	5%	3%	6%	91%
Nickel	BS20021	7%	8%	37%	55%	Nickel	BS20023	8%	9%	36%	55%
Stone	BS20031	11%	13%	55%	32%	Stone	BS20033	11%	12%	52%	36%
Almond	BS20041	12%	15%	61%	24%	Almond	BS20043	15%	17%	61%	22%
Cotton	BS20051	18%	20%	68%	12%	Cotton	BS20053	19%	20%	70%	10%

Glare control Tv = % of visible light transmitted through fabric

Thermal control As = % of solar energy absorbed by fabric

Rs = % of solar energy reflected by fabric

Ts = % of solar energy transmitted through fabric

## Properties



Thermal comfort



Long life



Visual comfort



Flame retardant



Easy to clean



Recyclable



Tear resistance



Through visibility

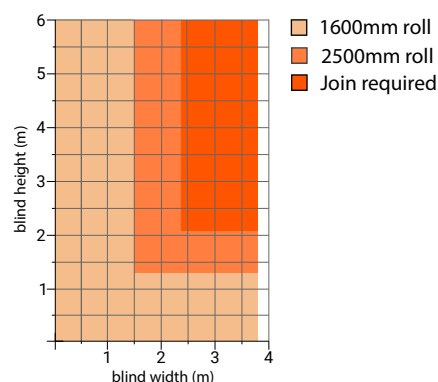


PVC free



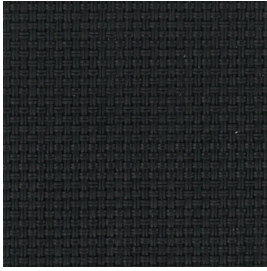
Fabric can be joined

## Size Parameters

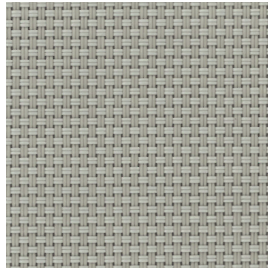


For further information, contact us on 01252 737973 or visit [www.waverley.co.uk](http://www.waverley.co.uk)

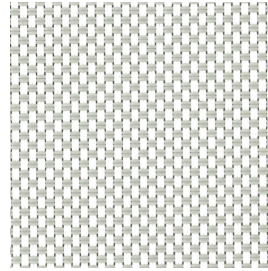
Visit [www.waverley.co.uk](http://www.waverley.co.uk) for further technical information



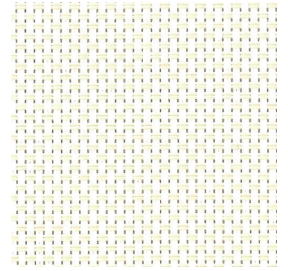
Midnight



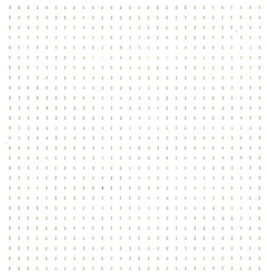
Nickel



Stone



Almond



Cotton

For further information, contact us on 01252 737973 or visit [www.waverley.co.uk](http://www.waverley.co.uk)

Visit [www.waverley.co.uk](http://www.waverley.co.uk) for further technical information