



Chelsea

Transparent Trevira CS FR 2400mm / 3000mm

DECORQUIP®



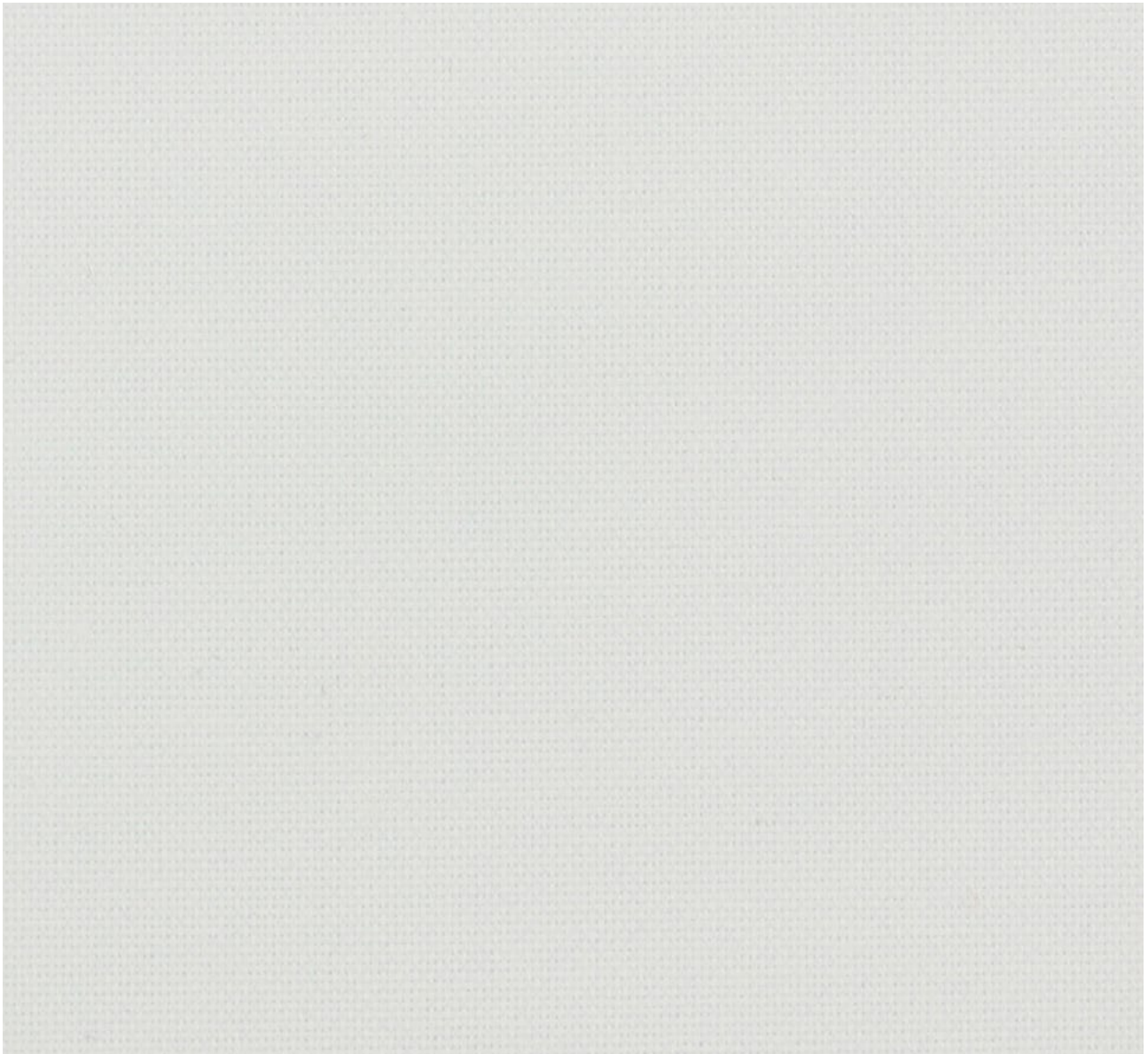
Chelsea

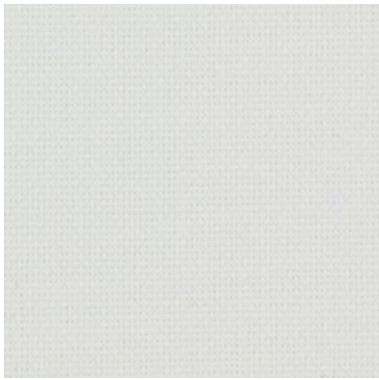
Chelsea's 100% Trevira CS weave makes it the ideal choice for commercial applications where a transparent fabric is needed. The fire retardant properties are achieved by impregnating instead of coating the fabric so they cannot be washed out. The fabric also has a beautifully soft, natural texture and feel.

- ✔ 30 colours to provide the perfect match or contrast to an area
- ✔ 2400mm or 3000mm fabrics to allow larger blinds without joins

4444RB240

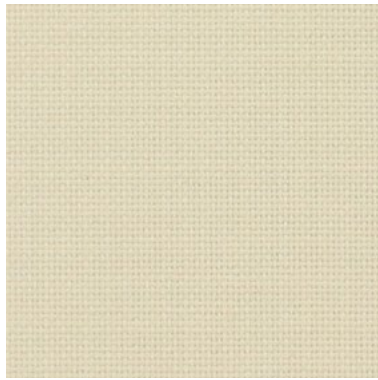
Blanc





4444RB240

Blanc



4450RB240

Buff



4452RB240

Honey



4446RB240

Gardenia



4432RB300

Sand



4436RB300

Croissant



4430RB300

Moth



4434RB300

Twill



4438RB300

Dune



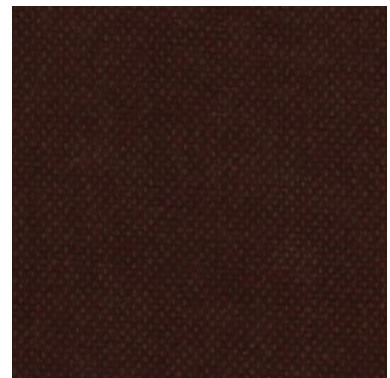
4484RB240

Dove



4440RB300

Chocolat



4464RB240

Chestnut



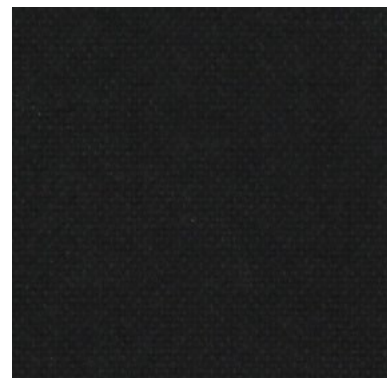
4486RB240

Steel Grey



4442RB300

Raven



4488RB240

Caviar



4448RB240

Vanilla



4468RB240

Apple Green



4466RB240

Lime



4454RB240

Lemon



4456RB240

Citrus



4462RB240

Lion



4458RB240

Sun Orange



4472RB240

Flame Red



4470RB240

Tango Red



4483RB240

Riviera



4480RB240

Imperial



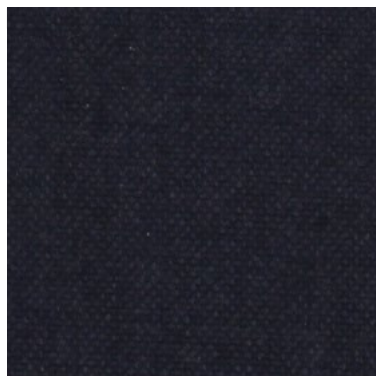
4478RB240

Delft



4474RB240

Wine



4476RB240

Indigo

Chelsea	
Base material	100% Trevira CS
Finish	Impregnated
Cleaning	Damp cloth
Recommended cut method	Ultra-sonic/crush cut
Roller roll length	ca. 35m - 38.2yd
Vertical roll length	ca. 100m - 109.3yd
Roller width	2400mm-3000mm - 94.4in-118.1in
Vertical width	89mm-127mm - 3.5in-5in
Shrinkage	≤ 1%
Weight	280g/m ² - 8.26oz/yd ²
Thickness	0.47mm - 0.018in
Light fastness	≤ 5 ISO105
Suitable for moist conditions	Yes
FR	DIN4102-B1 / NFP 92503 M1