

ECLIPSE

COLLECTION



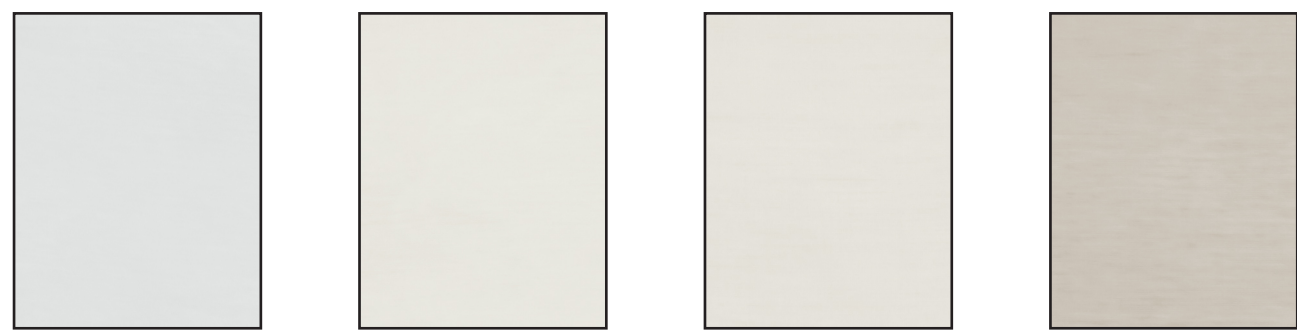
Flame Retardant



Voiles



Wide Width

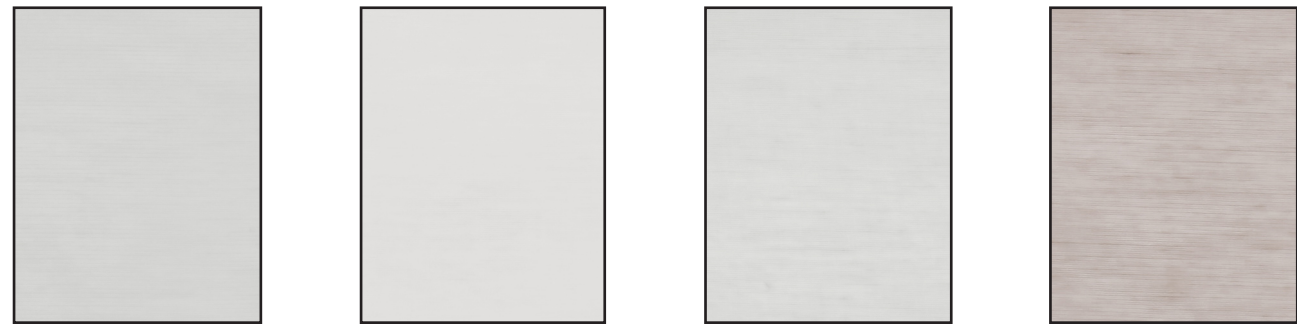


White

Cream

Champagne

Mink

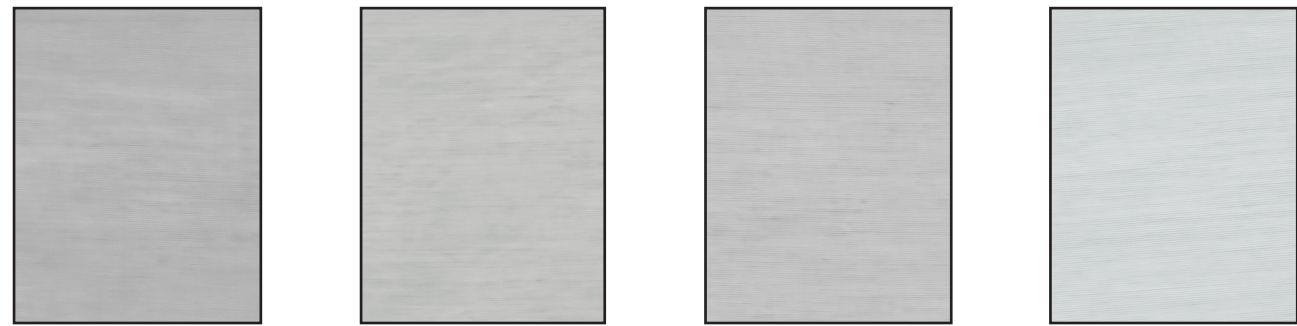


Ice

Silver

Dove

Taupe

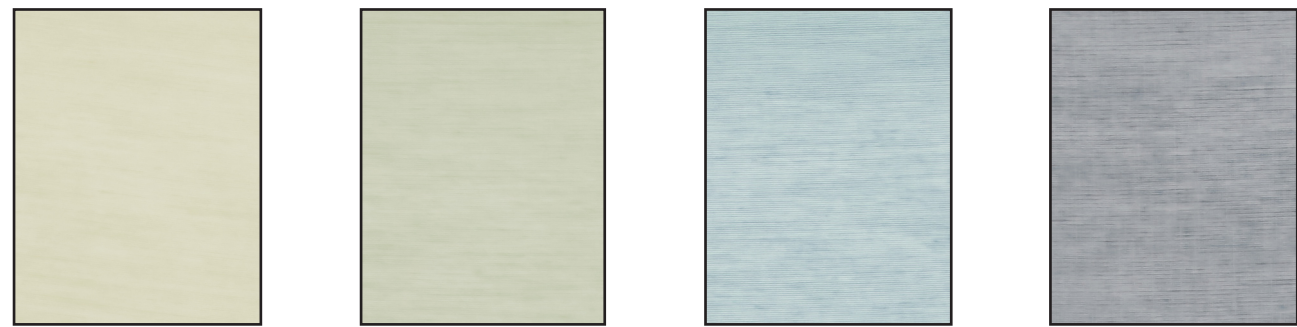


Ash

Cloud

Pebble

Slate Blue

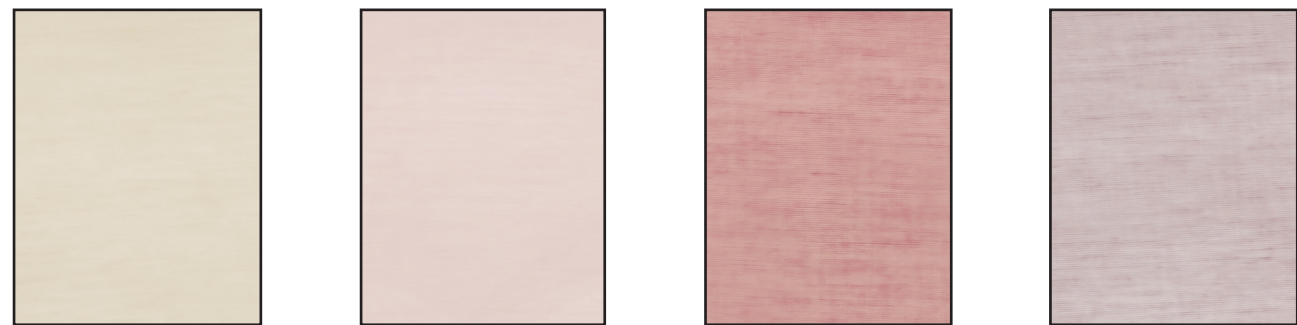


Zest

Apple

Azure

Indigo



Flax

Blush

Raspberry

Heather



PRODUCT TECHNICAL SPECIFICATION																			
DESIGN	FABRIC COMPOSITION	APPLICATION					WEIGHT g/m ²	WIDTH cm	FLAMMABILITY STANDARDS										
		CURTAINS	DIMOUT CURTAINS	BLACKOUT CURTAINS	BEDDING	UPHOLSTERY			MARTINDALE RUBS	ANTIBACTERIAL FINISH	STAIN RESISTANT FINISH	BS5815 Part 3 1991	BS5867 Part 2 Type B & C	BS5852 Source 5	BS7175:1-989	BS7176 Med Hazard, Source 0,1,5 testing over CMHR foam	B1 Germany	EN1021 1-2 (Cig & Match)	M1 France
ECLIPSE	100% Trevira CS	•					44	310	•					•			•	7	•

RECOMMENDED CLEANING

- Textured effects are due to the slub yarns used.
- Supplied folded in half on a roll

Samples of all ILIV fabrics can be ordered free of charge from www.i-liv.co.uk.

Whilst we endeavour to ensure that every batch matches our swatches, variations do occur. If you require an exact match to a previous order please make the Sales Team aware at the time of ordering and if possible please send a cutting for us to match to.

For full details of the wash and care instructions please refer to the ILIV website or price list.



Flame Retardant



Voiles



Wide Width

ILIV

— CONTRACT TEXTILES —

DRAPERY | VOILES
ECLIPSE
COLLECTION

ILIV Contract Textiles
SMD Group
Pittman Way, Fulwood
Preston, Lancashire
PR2 9ZD

ILIV

— CONTRACT TEXTILES —

T: +44 (0) 1772 651199
F: +44 (0) 845 519 7736
E: sales@smd-textiles.co.uk

www.i-liv.co.uk

Blank Page

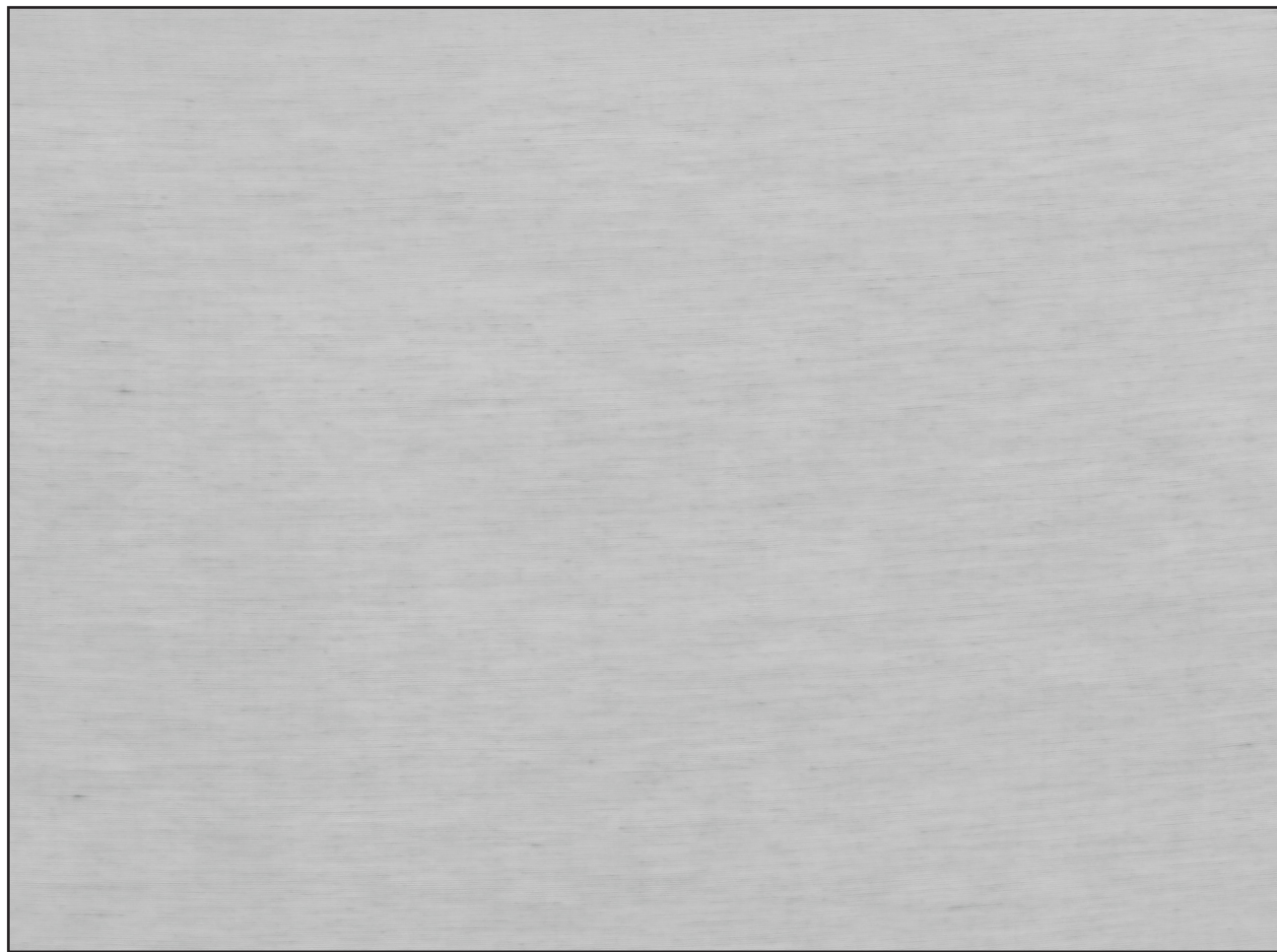
BACK PAGES OF SWATCHES WITH CUT OUT WINDOWS.

these feelers need to be see through. a piece of card needs to be stuck over the top with all the windows cut out and the fabric glued inbetween.

The sizes for the 20 swatches are for the windows. the fabric will have to be cut slightly larger to cover the edges of each window



Ice



Pebble