

| Product Data    | Top (Opaque)/ Bottom (Screen) Fabric                |
|-----------------|---|
| Composition     | PVC coated polyester with reflective silver backing |
| Width           | 1770 mm   |
| Thickness       | 0.47 mm / 0.32mm                                    |
| Weight          | 540 gsm / 290gsm                                    |
| Openness factor | 0% / 3%   |
| Fire rating     | B1/DIN4102-1, B-s2, d0                              |
| Cleaning        | Soapy water or steam cleaning                       |

## Thermal Control Values

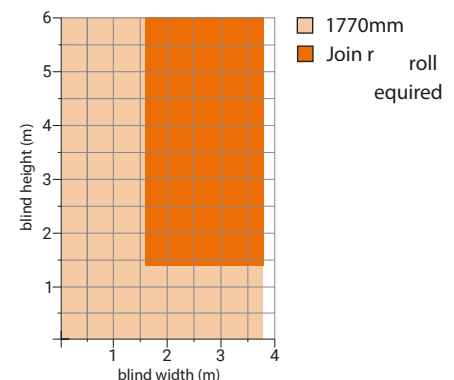
| Colour | Code  | Top fabric |    |     |     | Bottom fabric |    |     |     |
|--------|-------|------------|----|-----|-----|---------------|----|-----|-----|
|        |       | Tv         | Ts | Rs  | As  | Tv            | Ts | Rs  | As  |
| Slate  | SS001 | 0%         | 0% | 8%  | 92% | 2%            | 3% | 36% | 61% |
| Grey   | SS011 | 0%         | 0% | 25% | 75% | 3%            | 4% | 40% | 56% |
| Steel  | SS051 | 0%         | 0% | 45% | 55% | 5%            | 4% | 47% | 49% |
| Latte  | SS061 | 0%         | 0% | 40% | 60% | 5%            | 6% | 44% | 50% |
| Sleet  | SS091 | 0%         | 0% | 62% | 38% | 7%            | 9% | 48% | 43% |
| Cream  | SS101 | 0%         | 0% | 61% | 39% | 8%            | 9% | 47% | 44% |
| White  | SS111 | 0%         | 0% | 69% | 31% | 12%           | 9% | 50% | 41% |

Glare control Tv = % of visible light transmitted through fabric  
 Thermal control As = % of solar energy absorbed by fabric  
 Rs = % of solar energy reflected by fabric  
 Ts = % of solar energy transmitted through fabric

## Properties

-  Thermal comfort
-  Long life
-  Easy to clean
-  Visual comfort
-  Flame retardant
-  Tear resistance
-  Recyclable
-  Fabric can be joined

## Size Parameters

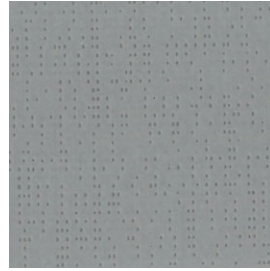


For further information, contact us on 01252 737973 or visit [www.waverley.co.uk](http://www.waverley.co.uk)

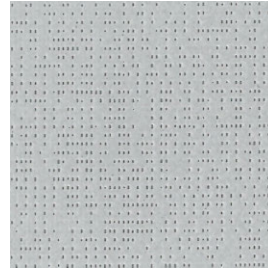
Visit [www.waverley.co.uk](http://www.waverley.co.uk) for further technical information



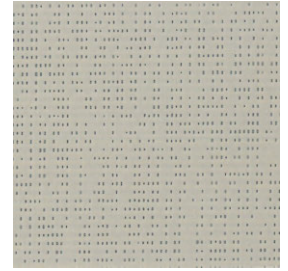
Slate



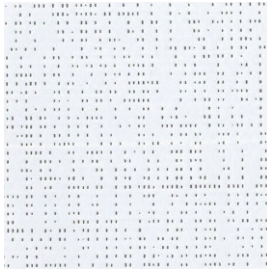
Grey



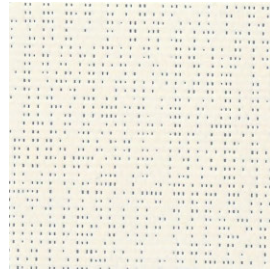
Steel



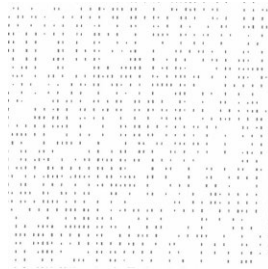
Latte



Sleet



Cream



White

For further information, contact us on 01252 737973 or visit [www.waverley.co.uk](http://www.waverley.co.uk)

Visit [www.waverley.co.uk](http://www.waverley.co.uk) for further technical information