

DeltaBlock® 40

Applications



Roller blinds



Panel blinds



Rooflight blinds



Vertical blinds

Properties



Long life



Flame retardant



Anti-microbial



Easy to clean



Tear resistance



Blackout



Fabric can be joined

Product Data

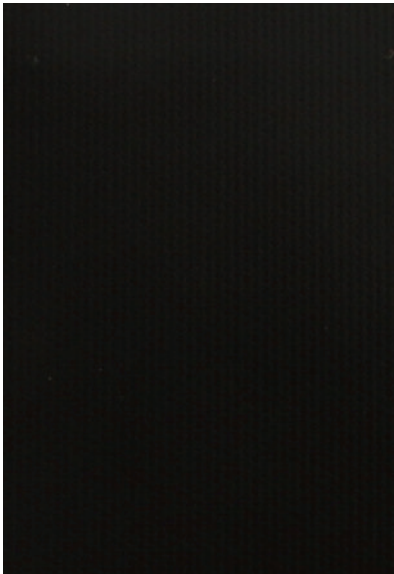
| | |
|-----------------|--|
| Composition | PVC Laminated fibreglass |
| Widths | 89mm, 127mm, 1830mm (2500mm & 3000mm available in selected colours) |
| Openness factor | 0% |
| Thickness | 0.25mm |
| Weight | 407gsm |
| Fire rating | BS5867 Part 2 Type B |
| Cleaning | Wipe clean with a damp cloth |

Thermal Control Values

| Colour | Openness | Code | Tv | Ts | Rs | As |
|--------|----------|-------|----|----|-----|-----|
| Black | 0% | DB401 | 0% | 0% | 5% | 95% |
| Bottle | 0% | DB402 | 0% | 0% | 7% | 93% |
| Navy | 0% | DB403 | 0% | 0% | 9% | 91% |
| Claret | 0% | DB404 | 0% | 0% | 17% | 83% |
| Sky | 0% | DB405 | 0% | 0% | 40% | 60% |
| Mint | 0% | DB406 | 0% | 0% | 47% | 53% |
| Grey | 0% | DB407 | 0% | 0% | 49% | 51% |
| Cream | 0% | DB408 | 0% | 0% | 65% | 35% |
| White | 0% | DB409 | 0% | 0% | 73% | 27% |

Glare Control Tv = % of visible light transmitted through fabric

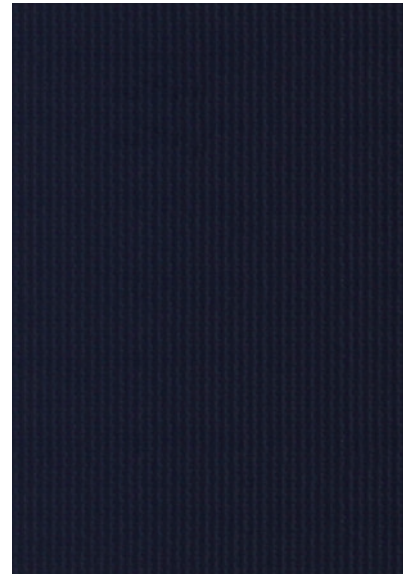
Thermal Control As = % of solar energy absorbed by fabric Rs = % of solar energy reflected by fabric
Ts = % of solar energy transmitted through fabric



Black



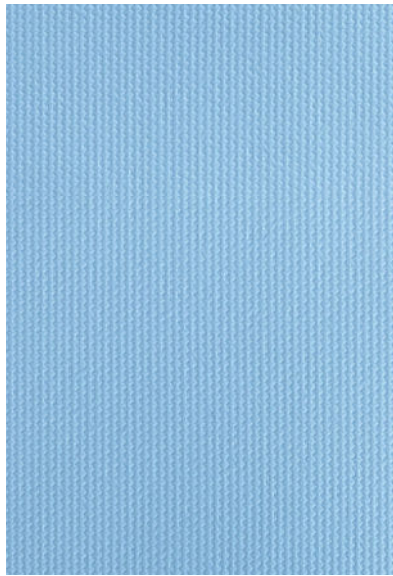
Bottle



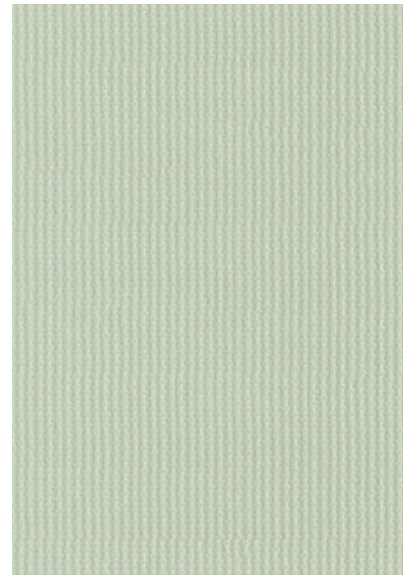
Navy



Claret



Sky



Mint



Grey



Cream



White

For further information, contact our dedicated helpline

 01252 737973  hello@waverley.co.uk  waverley.co.uk